

Stadtpark Norderstedt

If you have any questions, please contact the office of
Stadtpark Norderstedt:

Stadtpark Norderstedt GmbH
Stormarnstraße 34
22844 Norderstedt

Telefon: 040 . 3259930-00

Fax: 040 . 3259930-29

E-Mail: info@stadtpark-norderstedt.de



Stadtpark Norderstedt

STADTPARK NORDERSTEDT



The park of possibilities!

WELCOME TO STADTPARK NORDERSTEDT!



Over an area of more than 750,000 square meters, there are marvelous opportunities for relaxation, recreation and nature experience awaiting the visitors of the Stadtpark Norderstedt. With its cultural, educational and sports facilities, the Stadtpark Norderstedt offers an array of amazing sports and leisure activities. During the season from May to September, the varied program of events makes your visit to the park remarkable. The Stadtpark Norderstedt is divided into three main areas: Seepark (Lake Park), Waldpark (woodland Park) and Feldpark (Field Park). Here in the Stadtpark Norderstedt, you have much to discover!

Stay active!

ON THE BOARDS!



Wasserski Norderstedt in the Lake Park is a meeting point for water ski and wakeboard enthusiasts. It is one of the biggest water ski facilities in Northern Germany. It has eight obstacles which increase the challenge and fun. Wasserski Norderstedt organizes regular courses for beginners, variant events, and contests. Skis, boards and wetsuits are available for rent. Water skiing is a great activity for groups and company teams. For more information about the opening hours and entry fees please visit the following website: www.wasserski-norderstedt.de

SUN, BEACH AND FUN!



ARRIBA bathing beach has 4,000 m² of fine sandy beach and large lawn areas. People of all ages visit ARRIBA bathing beach in the Lake Park to enjoy the summer, sun, beach, and the crystal clear water. Here you can swim, sunbathe, build sand castles, play beach volleyball or simply relax. There are 3 floating pontoons and a large non-swimmer area. ARRIBA offers a varied program of events to ensure the best summer spirit. ARRIBA bathing beach is a real summer paradise! For more information about the opening hours and entry fees please visit the following website: www.arriba-erlebnisbad.de

OPEN AIR FITNESS



The fitness area in the Field Park reinterprets the old fitness trail; the yellow-tube distinctive marks of the "green" fitness club lies on 3,800 square meters in the open air. Fitness friends, beginners and professional athletes of every generation are invited to practice balance, endurance, strength and stretching. Whether you have special

needs or not, you can exercise at the seven stations according to your level of performance and individual needs. There are fitness videos for guidance which can be accessed via a QR code. **FREE OF CHARGE**

HIGHLIGHT FOR RUNNERS



No matter what day or season it is, in the Stadtpark Norderstedt you can go jogging, walking, cycling and skating all year round. The 2.1 kilometer loop around the lake makes that possible for you. The running route is lighted all the way up with LEDs to ensure that runners can turn around the lake at all times: at dawn and in the evening. With superb scenery,

running in the Stadtpark Norderstedt is what every runner dreams of! **FREE OF CHARGE**

SLACKLINING



Slacklining combines muscle building, body coordination and fun! A tip for all those who do not know this trendy sport yet: try it out! In our slackline course in the Field Park, there are 12 slackline posts over 1600 square meter. Sports fans can balance over artificial fiber tapes and overcome distances between five and over 50 meters. There are also courses available on request for beginners, groups, and companies. There are three

permanent lines and plenty of space for more. Enjoy the balance! **FREE OF CHARGE**

HIGH ROBES COURSE



The high ropes course is one of the great attractions of the Stadtpark Norderstedt. It has been recently added and was open to the public in the spring of 2017. The course provides an interactive experience for every visitor. You don't have to be a professional climber to be here! The high ropes course is beginners-friendly and features three different levels of elevation: 1.5 m, 4.5 m, and 8.5 m. Here you can improve your

motor skills without time pressure. The day pass covers rental climbing equipment. For more information about the opening hours and day pass prices please visit the following website: www.hochseilgarten-norderstedt.de

MINIGOLF, JOIN THE FUN!



Are you looking for adventure with the small white ball? The minigolf course in the Field Park is the perfect place for you! It has 18 modern neon green-yellow tracks along with exciting obstacles such as sand bunkers, water hazards, heights, steep curves and bent steel pipes. The

minigolf course invites beginners and advanced players to practice the perfect swing and prove their ball skills. There is no dress code when golfing in the Stadtpark Norderstedt, here you can play in jeans and T-shirt. For more information about the opening hours and entry fees please visit the following website: www.adventuregolf-norderstedt.de

LET'S KICK THE BALL!



For enthusiastic sports fans and real dream teams, the Streetball-Soccer field in the Field Park next to the Fitness area makes a great meeting point! Here you can play football, handball, basketball, hockey or table tennis. The 1,200 square-meter sports field offers goals, markings, baskets and two table- tennis tables. All year round and according to your mood, you can be

trained here in fixed groups or spontaneously, alone or with others. So, gather your friends and let the fun begin! **FREE OF CHARGE**

Paradise for children

PLAYGROUNDS



In the Stadtpark Norderstedt, there are three playgrounds and two other play stations where small and older children can slide, swing or climb and really let off steam. In summertime, the water playground becomes very attractive, so get ready for water fights! The fun continues in the forest playground over hanging bridges, ropes and towers. In the Field Park,

the wobbly sheep spring riders are a real highlight for the young children. And for the kids who like to go higher, the climbing nest and the giant swings are the right places. The higher, the better! **FREE OF CHARGE**

EXPLORING PURE NATURE



“Wilde Welt” in the Field Park is a 6,000-square-meter area of nature experience for children. Between densely-covered hills, muddy paths, climbing trees, thorny bushes and wild meadows, there is a lot of space to understand nature. Whether it is about discovering the construction of huts, leaf mats or new paths in the bushes, there are no prohibitions. Only

nature sets for the children natural boundaries. Parents of 6-year-old children or older may stay outside. **FREE OF CHARGE**

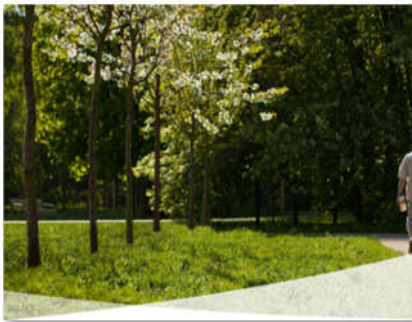
ON THE FARM



The farmyard in the Field Park is a great attraction for kids. Here, they can hear gloating, grunting, and cackling in every corner of the farm. Goats, pigs, chickens and other domestic animals and endangered species have found here a new home on 4,000 square meters. The farm is a project of Norderstedter Werkstätten. The

employees cherish the animals and look forward to your visit and to the curious questions of children.

Close to Nature



VARIETY FOR FRUIT LOVERS

There are over 50 cherry, apple and plum trees in the fruit orchard which wait for the summer to come and the fruits to ripen. Their great varietal diversity differs significantly from the standard range available in stores. The fruit orchard has also an ecologically valuable aspect; it

provides a habitat for many animals and plants. Climbing the trees in the orchard to pick fruits is not allowed, but you can pick the fallen or the low-hanging fruits. The fruit orchard is located in the Field Park opposite to the LionsWerkstatt.

A DREAM IN PURPLE



In late summer, when the flowers of many plants have already passed their best time, we invite you to Stadtpark Norderstedt! For then, in the historical cultural landscape, the heyday of the heath begins. The bees hum everywhere and the heath is covered with the purple color, a shade that is very relaxing for the eyes. The ground-

level plants spray a dreamlike atmosphere and give the late summer a special touch.

ENCOUNTER OF CULTURES



The intercultural garden in the field park is a great meeting point for people from different cultural backgrounds who like gardening. Here, you can garden and learn about other cultures at the same time. The intercultural garden gives a good example of how an intercultural community can function in a small way, when everyone has a task and can

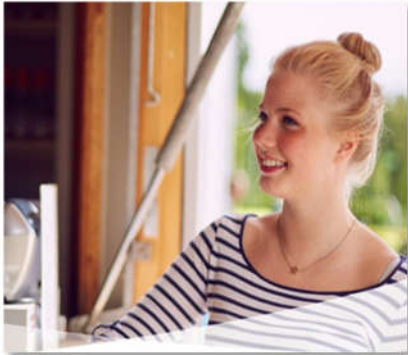
contribute with their abilities. There are various international festivals that take place in the garden during the year such as the Iranian Nowruz festival and the African festival.

For further information please visit the following website:

www.ikg-norderstedt.de

Places to eat

KIOSK



What if you find yourself strolling through the park longer than you thought and with fresh air, exercising and moving around you get hungry? No problem! The refreshment kiosk in the Field Park next to the mini-golf course offers a variety of snacks and soft drinks. It is also a nice spot for a coffee break. In the warm season, the Kiosk is the starting point for all ice fans!

HAUS AM SEE



This is a nice full service restaurant by the lake where you can eat delicious food and enjoy the scenery. The lake is always a delight! Here you can have breakfast or brunch with friends, a festive buffet at a family party or simply relax with colleagues at noon. The sun terrace by the water gleams with a unique view of the park lake. The light-flooded restaurant spoils you with regional, seasonal and freshly prepared specialties. Many of the ingredients come from organic farming. Here you can dine and unwind! For more information about the opening times of the restaurant, please visit www.restaurant-haus-am-see.de

STRANDHAUS (HOUSE BEACH)



Strandhaus Norderstedt charms you with its bright and stylish lounge atmosphere. It is located beside the water. Every Thursday there is After-work bar. And whenever you want an extraordinary event location for weddings, family celebrations or company events, Strandhaus Norderstedt is the perfect place! When the weather is good, the beach house is open for lunch and you can chill and enjoy the delicious cakes, cocktails, coffee specialties and a wonderful lake view. For more information: www.strandhaus-norderstedt.de

Important Information

OPENING TIMES



The park is open 365 days a year between 5am and 11pm. Opening hours for special events and facilities in the park may differ. The entrance is free of charge!

The following are the partners of Stadtpark Norderstedt:

- ARRIBA Strandbad
- Restaurant Haus am See
- Adventure Golf
- Strandhaus Norderstedt
- Wasserski Norderstedt
- Hochseilgarten Norderstedt

GRILLING & BBQS & PICNICS



There are designated barbecue areas, which can be used without prior registration, depending on their availability. Some of the barbecue spots are at the forest playground and also at the field playground. Please take a look at the site plan of the park to know more about these spots. The food and the grilling equipment must be brought along. For picnics, there is a giant forest area (Waldbühne) in the Field Park where visitors can have a picnic. **Please keep the park clean!**

Trash cans are placed all over the area!

DRINKING FOUNTAINS



The drinking fountain in the Field Park offers the visitors of the park fresh drinking water. There is also another drinking fountain on the running loop around the lake. **Please note that the drinking fountains are closed in winter.**

RESTROOMS



There are several clean and great-in-shape restroom facilities distributed throughout the park, which makes your visit to Stadtpark Norderstedt a comfortable experience. **Please keep in mind that the toilets are not open during the winter.**



Stadtpark Norderstedt

FREE WIRELESS THROUGH THE PARK



If you would like to send a message via WhatsApp, post the latest picture on Facebook or call and send mails, it is fast and free with the Norderstedt public WLAN network. Wilhelm.Tel is active in Stadtpark Norderstedt. If you are a Wilhelm.Tel customer you have a permanent access to MobyKlick (S) network anyway. Your mobile

device will automatically be connected to the network if you activate WLAN. If you are not a wilhelm.tel customer, no problem! You can send a temporary access via SMS. First, search the available WLAN networks, then select MobyKlick and go through the menu.

HOW TO GET THERE WITH PUBLIC TRANSPORT



Take the subway line **U1** of the HVV from Hamburg or the AKN- line **A2** from Schleswig-Holstein to "Norderstedt Mitte". There you can take bus line **293** heading to "Kisdorf" or bus line **393** to "Harkshörn". After a short journey, get off at the bus stop "Stadtpark", directly in front of the main entrance or at

the stop "Theodor-Storm-Straße" which takes only a 4-minute walk to the entrance.



Stadtpark Norderstedt

Seepark – Lake Park

- 1 ARRIBA Strandbad – Bathing beach
- 2 Walkway with a viewpoint
- 3 Haus am See – Restaurant
- 4 Exercise area for dogs
- 5 Courtyard
- 6 Klasse! Im Grünen – Meeting point
- 7 Kletternest – Climbing facility for children
- 8 Kulturwerk – Multi-functional centre for cultural activities
- 9 Looprunde – Circuit round the lake
- 10 School of music
- 11 Promenade
- 12 Giant swing
- 13 Staudenband – Flower beds with perennial plants
- 14 Strandhaus Norderstedt – Restaurant
- 15 Drinking fountain
- 16 Water ski Norderstedt
- 17 Water playground

Waldpark – Woodland Park

- 18 Viewpoint
- 19 Birkenloop – Birch tree circuit
- 20 Heather
- 21 Heideleop – Heather circuit
- 22 Klasse! Im Grünen – Meeting point
- 23 Moorloop – Moorland circuit
- 24 Clearing with flower beds
- 25 Waldbühne – Open-air theatre
- 26 Woodland playground

Feldpark – Field Park

- 27 Adventure Golf
- 28 Farmyard
- 29 Birch tree islands
- 30 Blütenband – Flower beds
- 31 Bustan – Biblical vineyard and fruit garden
- 32 Feldpark meadow
- 33 Field playground
- 34 Fitness training course
- 35 High rope course
- 36 Intercultural garden
- 37 Kiosk
- 38 Klasse! Im Grünen – Meeting point
- 39 Herb Garden
- 40 LionsWerkstatt – Workshop and meeting point
- 41 Norderstedter Arboretum
- 42 Orchard
- 43 Slackline circuit
- 44 Streetball/SoccerPlatz – Sports field
- 45 Drinking fountain
- 46 WildeWelt – Area for children to experience nature

- P Parking place
- ⌂ Entrance/Exit
- ☒ Restaurants/Cafés/Catering
- ⌂ Playground
- ☒ Picnic/Barbecue area
- 👁 Viewing point
- 🐕 Exercise area for dogs
- 🚲 Bicycle parking
- 🚏 Bus stop
- 🚻 Toilets (closed during winter season)
- 🚰 Drinking fountain (not available during winter season)



Stadtpark Norderstedt

